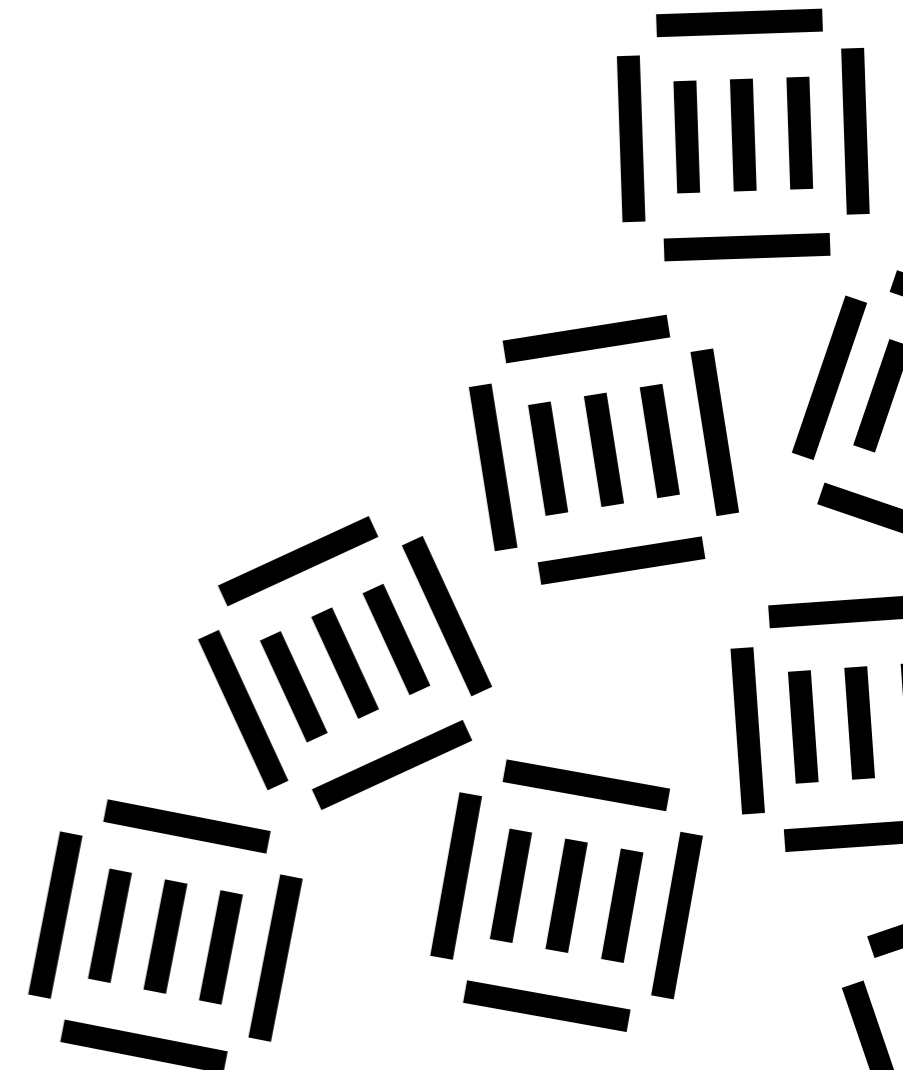


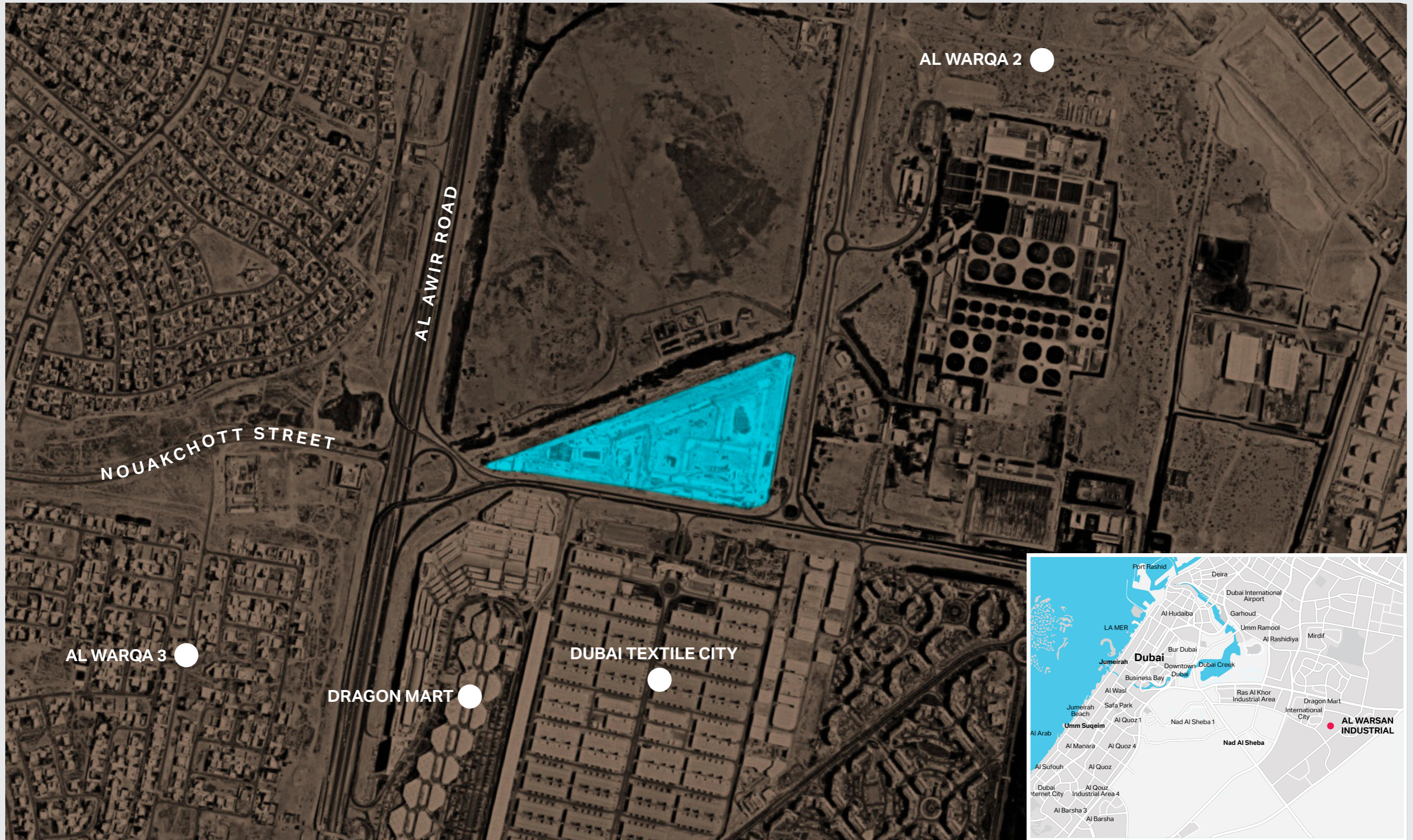


Al Warsan Industrial Plot is a freehold building project with land that can be used for accommodation, warehouses, refrigerated warehouses and other commercial purposes. The permitted height for construction is Ground Plus Mezzanine (G+M) for warehouses and refrigerated warehouses, Ground Plus Five (G+5) for housing and Ground Plus One (G+1) for commercial buildings. Al Warsan Industrial has no time constraints on construction and no service charge. Al Warsan Industrial Plot is located on Ras Al Khor Road (E-44) opposite Dubai International City.





# Al Warsan Industrial





# AI Warsan Industrial

AI Warsan Industrial is located on Ras Al Khor Road opposite International City.

- **Warehouse and Refrigerated Warehouse:**  
Permitted Height G+M
- **Labor Camp:** Permitted Height G+5
- **Commercial:** Permitted Height G + 1
- **Ownership:** Freehold
- **Payment Method:**  
>Payment Plan
- **No time limit to construct**
- **No service charge**
- **The development follows Dubai Development Authority (DDA) rules and regulations in terms of design & construction**  
<https://dda.gov.ae/dda-services/zoning-services/>

LAND USE	PLOT TYPE
LABOUR ACCOMODATION	●
INDUSTRIAL (WAREHOUSE)	●
INDUSTRIAL (REFRIGERATED WAREHOUSE)	●
PUBLIC FACILITIES	○
COMMERCIAL	●
PARK	●
UTILITIES	○
LANDSCAPE / OPEN SPACE	●
RIGHT OF WAY	○
PROJECT BOUNDARY	—

NOUAKCHOTT STREET

